



Increased safety in heavy lifting operations

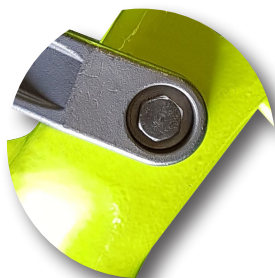
WRIN

The WRIN STR Handle is a safety handle that provides additional safety to the Gunnebo Industries' BK safety hook family. With the WRIN STR Handle the operator opens and closes the safety hook without placing any hands inside the hook, resulting in reduced risk of personal injury on worksites. The handle is easily mounted to the safety hook, without compromising the integrity of the design and capabilities of the hook.



Unique design

- Can be attached to safety hooks within the BK family, without compromising the integrity of the hook's design and capabilities.
- The handle is clamped to the hook and fixed by the hook's trigger pin.



Quality stainless steel

- Made of AISI 316.

Improved workplace safety

- With the WRIN STR Handle there is no need to place a hand inside the safety hook. This reduces the risk of personal injury on worksites.

Easy retrieval

- Hole for attaching a lead line for easy retrieval.



WRIN STR Handle

Suitable to safety hooks within the BK family

With the WRIN STR safety handle you get all the clever features offered within our BK safety hook range, together with the extra safety needed in high risk applications and harsh environments.

The WRIN STR Handle is easily mounted to safety hooks within the BK family. For sling shops the WRIN STR Handle is the perfect complement to the BK safety hooks, reducing the need for a large range of different safety hooks in stock.

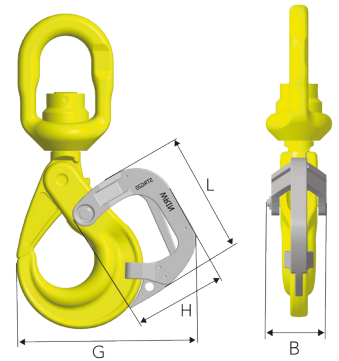
Order the WRIN safety handle as a complement to your regular product offer.

WRIN STR Handle

Suits the following safety hooks within the Gunnebo Industries BK family.

Art. no.	Code	Hook size (mm)	Dimensions (mm)				Suits the following safety hooks:	Weight (kg)
			L	H	B	G		
Z101413	STRG13	13	145	103	60	184	BK, BKG, BKL, BKLK	0.75
Z101414	STRG16	16	182	140	80	255	BK, BKG, BKL, BKLK	1.90
Z101415	STRG20	18/20	194	155	90	280	BK, BKG, BKL, BKLK	2.50
Z101416	STRG22	22	203	164	90	300	BK, BKLK	2.60
Z101417	STRG26	26	215	192	103	348	BK, BKLK	3.45
Z101418	STRG32	32	263	179	103	380	BK, BKLK	3.90

Material: Stainless steel according to AISI 316.



Suits the following BK safety hooks:



BK

The "original" safety hook with eye connector.



BKG

Safety hook with clevis connector and standard latch.



BKL

Safety hook with swivel for improved positioning of the hook before the load is lifted (360° rotation).



BKLK

Safety hook with ball-bearing for 360° rotation under full WLL.

Art. no.	Code	Art. no.	Code	Art. no.	Code	Art. no.	Code
Z101032	BK-13-10	Z101034	BKG-13-10	Z101036	BKL-13-10	Z101038	BKLK-13-10
Z101040	BK-16-10	Z101042	BKG-16-10	Z101044	BKL-16-10	Z101370	BKLK-13-10 W OS
Z101089	BK-18/20-10	Z101091	BKG-20-10	Z101093	BKL-18/20-10	Z101046	BKLK-16-10
Z101325	BK-22-10	-	-	-	-	Z101371	BKLK-16-10 W OS
Z101326	BK-26-10	-	-	-	-	Z101095	BKLK-18/20-10
Z101355	BK-26-10 OS	-	-	-	-	Z1013561	BKLK-18/20-10 W OS
Z101357	BK-32-8	-	-	-	-	Z101294	BKLK-22-10 OS
Z101364	BK-32-8 OS	-	-	-	-	Z101295	BKLK-26-10 OS
-	-	-	-	-	-	Z101344	BKLK-32-8 OS

All dimensions in mm.

GI-ph1004a-E